



AMECA SUPPLY



AMECA **SUPPLY**

Achieving the **highest standard quality and consistency** requires state of the art QC and QA, including internal quality management checks and audits, rigorous batch control, and independent external audits. Every measure will be put in place to guarantee the products meet all current customer specifications without exception. In addition, our specialist RD&I team will be continuously engaged with clients to enhance the products and anticipate future demand requirements.

On schedule delivery of is the sole focus of AMECA Supply's logistical arm. This begins with coordinating the production in Sri Lanka, obtaining appropriate import licenses, storage and warehousing, and all of the modes of transportation required to ensure the material arrives on time. AMECA Supply will implement an exhaustive risk management plan to identify and address any issues that could potentially disrupt production or delivery. This includes various built-in redundancies, contingency, and mitigation strategies.

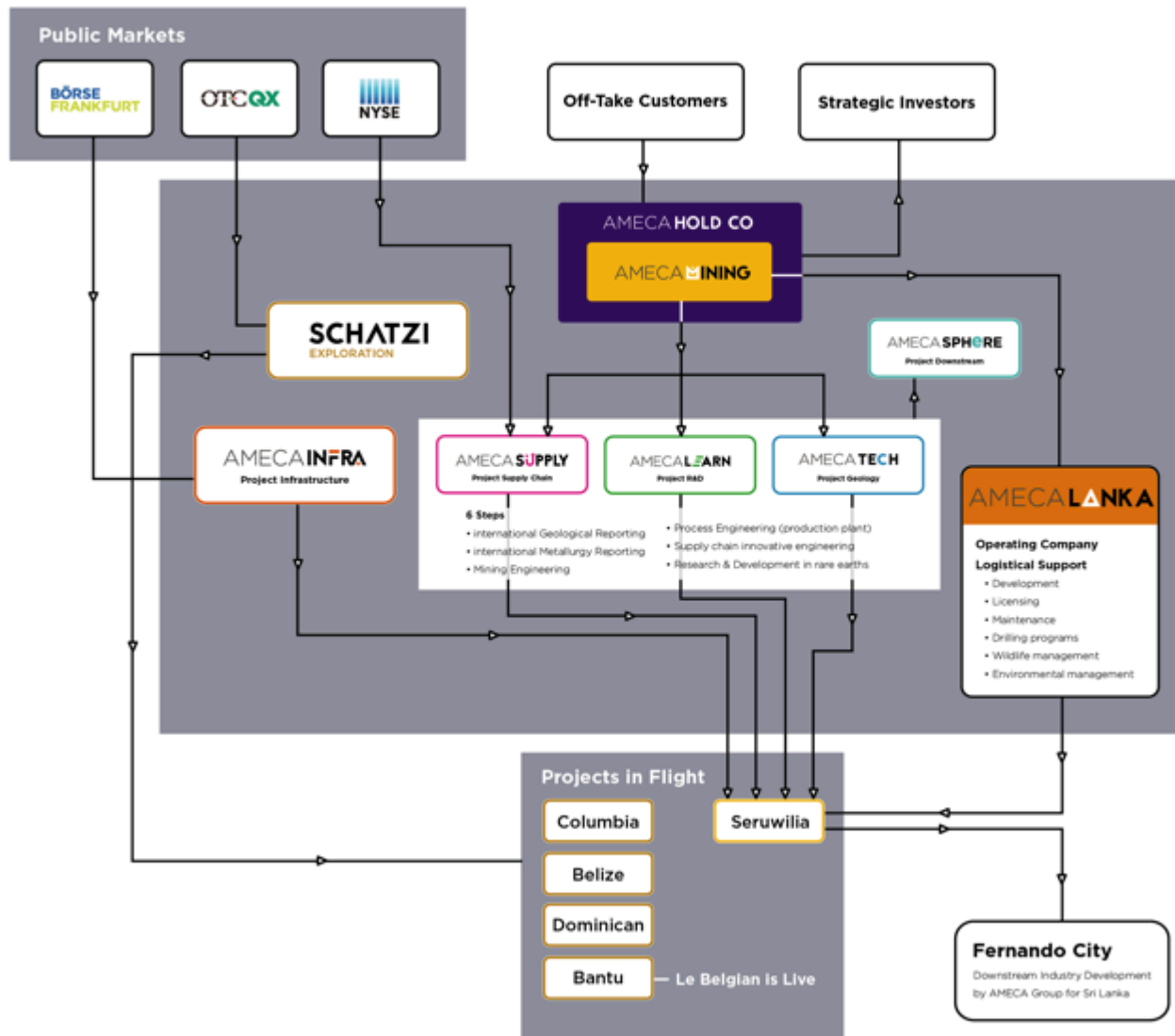
Recognizing the importance of **transparency and accountability**, the organization's inventory management systems are designed to provide visibility of the material through all stages of production, inventory, and delivery. In addition, AMECA Supply will develop predictive and prescriptive analytics and AI modeling to anticipate changes in demand and identify potential issues.

Finally, AMECA Supply is tasked with setting industry leading **customer service** standards and providing administrative support, billing and financing. The team will work with clients to provide a seamless interface to integrate with customers' existing order and supply chain platforms.



Company Structure

AMECA[GROUP]



AMECA SUPPLY

- With graphite being the predominant material in high quality anodes in batteries, global demand for graphite has skyrocketed by 57% in the last 6 months.
- AMECA's Supply focuses on developing relationships with internal and external vendors around the globe in order to support strengthening supply chains.
- Through strong and sustained relationships with local authorities, AMECA Supply is able to meet Battery Manufacturing needs swiftly and smoothly.
- AMECA Supply is able to send out high quality 99.9%+ purity graphite samples to Battery Manufacturers and develop supply agreements if there is a mutual fit.
- Lastly, AMECA Supply is able to develop innovative platforms that meet client demands through collaborating and overseeing **AMECA LEARN**

AMECA LEARN

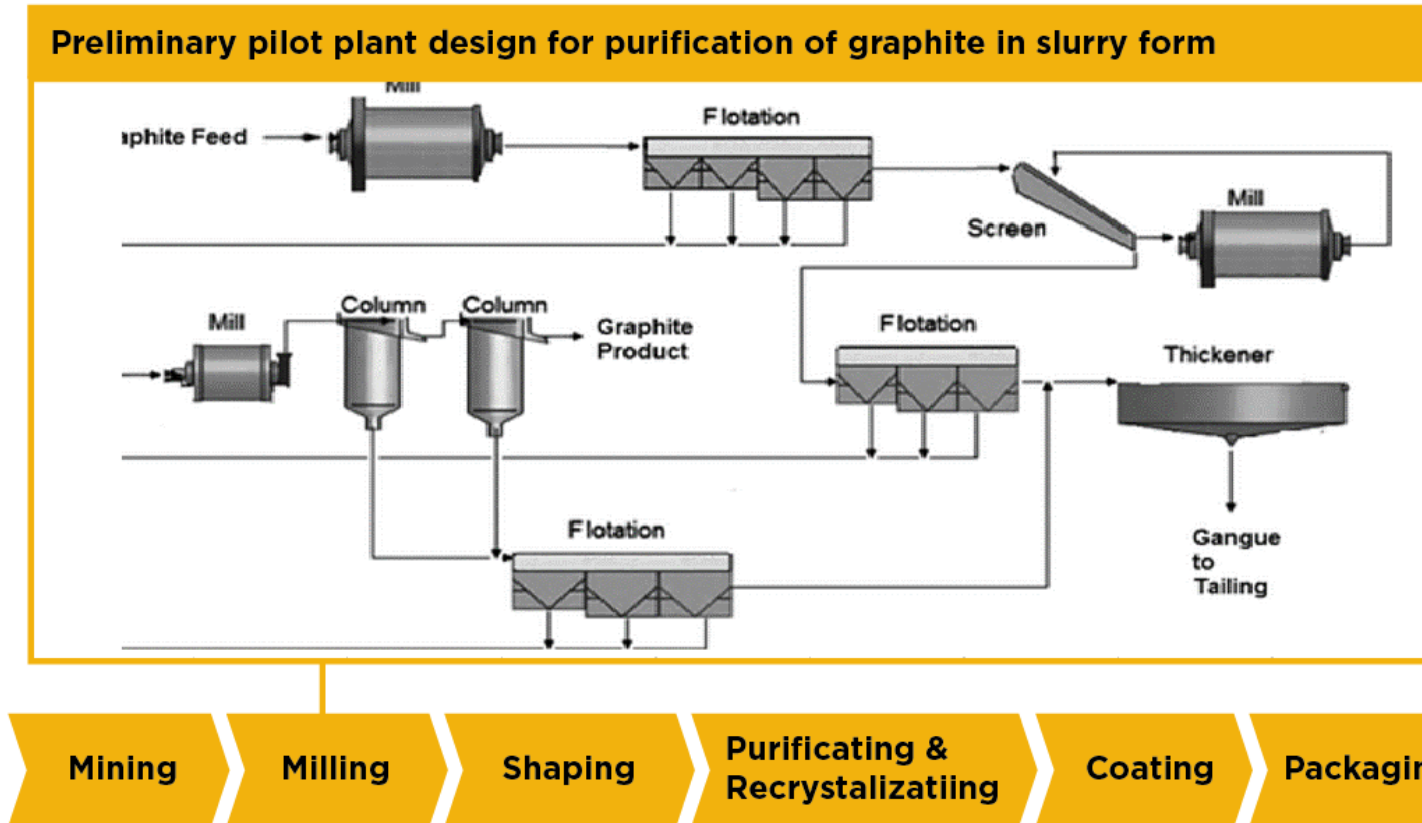
- Research and Development of Graphite, Graphene, and Rare Earth Applications
- Screen for potential clients, analyze their specific requirements, and develop appropriate solutions.
- Engage nanotechnology experts to initially focus on value-added opportunities for graphite powder such as coatings as well as downstream applications such as graphene.
- Research applications for other minerals found on AMECA Mining properties such as REEs.

Sales Forecast	Year 1	Year 2	Year 3	Year 4	Year 5
Sales					
Graphite Trade	\$6,490,200	\$12,682,000	\$16,039,000	\$20,888,000	\$24,618,000
Mining Consultancy	\$0	\$6,000,000	\$8,000,000	\$12,000,000	\$15,000,000
Research and Development Services	\$5,000,000	\$12,000,000	\$18,000,000	\$24,000,000	\$28,000,000
Total Sales	\$11,490,200	\$30,682,000	\$38,039,000	\$56,888,000	\$67,618,000
Direct Cost of Sales	Year 1	Year 2	Year 3	Year 4	Year 5
Graphite Trade	\$783,000	\$1,530,000	\$1,935,000	\$2,520,000	\$2,970,000
Mining Consultancy	\$0	\$3,600,000	\$4,800,000	\$7,200,000	\$9,000,000
Research and Development Services	\$2,000,000	\$3,500,000	\$9,000,000	\$12,000,000	\$14,000,000
Subtotal Direct Cost of Sales	\$2,783,000	\$8,630,000	\$15,735,000	\$21,720,000	\$25,970,000

Processing & Production

AMECA[GROUP]

Specialty Manufacturing Stages



Raw Material **Anode Active Material**

USA Rare Earths Act

Reporting

"A comprehensive tax incentive program to encourage investment in U.S. based rare earth and critical mineral production, from mining, reclamation and recycling through processing and advanced material production, along with a grant program for demonstration projects developing primary mining projects for the rare earths and critical minerals, as well as "secondary recovery" projects, recovering the materials from legacy mine waste and e-Waste."

Section 4

A grant program to "finance pilot projects for the development of critical minerals and metals in the United States" - which may not exceed \$10,000,000 with priority given to economically viable projects.

About our Product

AMECA[G^{GROUP}]

Seruwila Graphite



Dry Processing



Tier 1 Quality Graphite



No Intercalation



Low Cost Processing



Less Environmentally Invasive



Reduced Energy Needs



Low Air Pollution Source

African Graphite



Tier 2 Quality Graphite



High Energy Mining



High Energy Processing

Quebec Graphite



Tier 1 Quality Graphite



High Cost Processing



Intercalation



High Energy Processing



Environmentally Risky¹

1. <https://miningwatch.ca/news/2020/3/1/investor-alert-social-environmental-financial-risks-nouveau-monde-graphite>

Synthetic Graphite (China)



Tier 1 Quality Graphite



Large Air Pollution Source



High Energy Processing



Waste Product Burning



High Environmental Impact

Contact Information

AMECA[G^{OLD}GROUP]

Mark Bolster, CEO

1 437 993 2581

markb@schatziexploration.com

Michael Paterson, President

1 519 362 7679

michaelpaterson@amecamining.com

Norton Fernando, Partner

94-77-227-4662

nortonfernando@amecamining.com